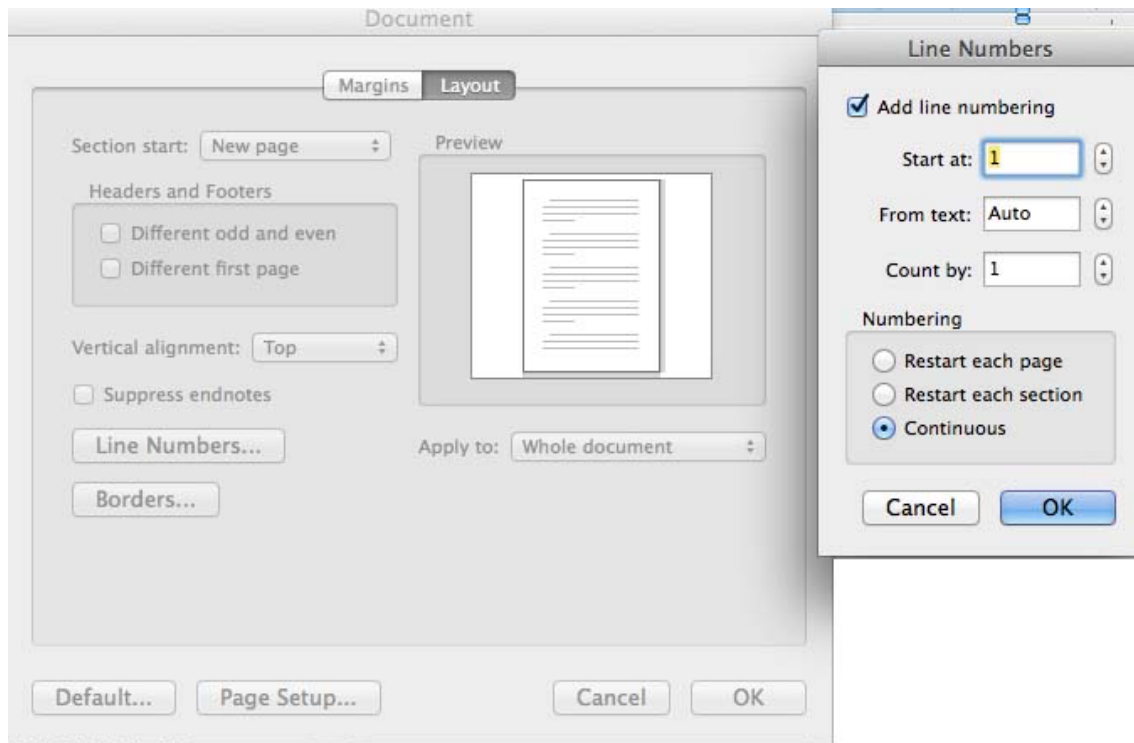


manuscript example

General information:

The manuscript must be prepared with a standard word processor (preferably Microsoft Word or OpenOffice). Pages should be in A4 format and numbered. Times New Roman 12 pt is the advised font. Lines should be left numbered *in continuum**, to make the referees' work easier, double-spaced and without interruption of page.

* **HOW TO ADD LINES NUMERATION** -> see figure below



manuscript example

Title (without acronyms)

Author One,¹ Author Two,² Author Three,² Author Four³

¹Department, Institution, City, State or Province, Country

²Department, Institution, City, State or Province, Country

³Department, Institution, City, State or Province, Country

Correspondence: Author One, Department, Institution, address, postal code, city, State or Province, Country. Tel. +39.001.111111 - Fax: +39. 001.222222. Email: correspondingauthor@email.com

Acknowledgments: *Acknowledgements should include contributions from anyone who does not meet the criteria for authorship.*

Funding: *Funder name and/or grant/award numbers, if any.*

Contribution: *Acknowledgement that all authors have contributed significantly and that all authors agree with the content of the manuscript* (<http://www.icmje.org/recommendations/browse/roles-and-responsibilities/defining-the-role-of-authors-and-contributors.html>).

Conflict of interest: *The authors declare that no conflict of interest / Author One is employed by..... Author Two received grants from*

Availability of data and materials: **Choose among the following or indicate your statement on matter:** *All data generated or analyzed during this study are included in this published article. /// The data used to support the findings of this study are available from the corresponding author upon request. /// The datasets used and/or analyzed during the current study are available from the corresponding author on reasonable request.*

Ethics approval and consent to participate: *indicate your statement on matter. The Protocol number of any Ethic committee / institution that approved the study must be stated*

Patient consent for publication: *indicate your statement on matter. If not applicable, indicate it.*

manuscript example

Informed consent: Choose among the following or indicate your statement on matter:

- *Written informed consent was obtained from a legally authorized representative(s) for anonymized patient information to be published in this article. or*
- *The manuscript does not contain any individual person's data in any form.*

Significance for Public Health

not exceeding 150 words. In this section authors are to describe the significance of the research reported in the article for, and/or its impact on, public health. In the “design and methods” section, the authors must clearly indicate the date, when their study was carried out.

manuscript example

Abstract

1 *The abstract should start with a clear statement of the objective and must conclude with*
2 *one or two sentences that highlight important conclusions and should summarise*
3 *pertinent results in a brief but understandable form. References or tables/figures are*
4 *never cited in the abstract.*

5 **Please consult the author guidelines for the journal to confirm that your manuscript will**
6 **comply with the journal's sections requirements.**

7

8

9

10 **Key words:** Xxxx, Xxxxxx, Xxxxxx, Xxxxx, (maximum 5 key words).

11

manuscript example

12 **Introduction**

13 **TEXT**

14 The **Journal of Public Health Research** (JPHR) is an online Open Access, peer-
15 reviewed journal in the field of public health science. The aim of the journal is to stimulate
16 debate and dissemination of knowledge in the public health field in order to improve
17 efficacy, effectiveness and efficiency of public health interventions to improve health
18 outcomes of populations. This aim can only be achieved by adopting a global and
19 multidisciplinary approach.¹ The **Journal of Public Health Research**² publishes
20 contributions from both the “traditional’ disciplines of public health, including hygiene,
21 epidemiology, health education, environmental health, occupational health, health policy,
22 hospital management, health economics, law and ethics as well as from the area of new
23 health care fields including social science, communication science, eHealth and mHealth
24 philosophy, health technology assessment, genetics research implications, population-
25 mental health, gender and disparity issues, global and migration-related themes. In
26 support of this approach, JPHR strongly encourages the use of real multidisciplinary
27 approaches and analyses in the manuscripts submitted to the journal.^{3,4} The Journal
28 publishes xxxxxxxxxxxx.⁵⁻⁸

29
30 **Design and Methods***

31 **Subheading(s) if needed (e.g.,– Statistical analysis)**

32 **TEXT**.....

33 When reporting experiments on human subjects, authors should indicate whether the
34 procedures followed were in accordance with the ethical standards of the responsible
35 committee on human experimentation (institutional and national)

manuscript example

36 e.g., *The experiment has been conducted under the authorization of the Ethic*
37 *Committee of the University of XXXX (Italy), with document no. 1234567.....*
38
39 (Table
40 1)
41
42
43 (Table 2).
44
45
46
47 **Subheading**
48
49
50
51
52(Table 3).
53

manuscript example

54 **Results**

55 **Subheading(s) if needed (e.g., Cell differentiation)**

56 **TEXT**.....

57

58

59 **(Figure 1).**

60
.....

61 **(Table 3 - Figure 2).**

62
.....

63

64

65**(Table 4).**

66
.....

67

68

69

70

manuscript example

References

- 71 1. Liu JY, Martinian L, Thom M, Sisodiya SM. Immunolabeling recovery in archival,
72 post-mortem, human brain tissue using modified antigen retrieval and the catalyzed
73 signal amplification system. *J Neurosci Methods* 2010;190:49-56.
- 74 2. Eisele S, Krumbholz M, Fischer MT, et al. Prospects of transcript profiling for
75 mRNAs and MicroRNAs using formalin-fixed and paraffin-embedded dissected
76 autoptic multiple sclerosis lesions. *Brain Pathol* 2012;22:607-18.
- 77 3. Wimmer I, Tröscher AR, Brunner F, et al. Systematic evaluation of RNA quality,
78 microarray data reliability and pathway analysis in fresh, fresh frozen and formalin-
79 fixed paraffin-embedded tissue samples. *Sci Rep* 2018;8:6351.
- 80 4.
- 81 5.
- 82 6.

83

manuscript example

84 Table 1. Socio-demographic data.

Patients (%)	Gender	Occupation	Nationality	Marital status
3 (48)	Male	xxx	xxxx	xxxxx
5 (61)	Female	xxx	xxxx	xxxxx

85

***Tables:** Tables are numbered consecutively in Arabic numbers without “no.” before the number. References should be made in the text to each table. The desired style of presentation can be found in the above sample and in published articles. Titles of tables should be descriptive enough to be able to stand alone. **Do not present the same data in tabular and graphic form.** There’s no limited tables number, but they must be in a reasonable number.

Table footnotes: please use the following symbols, in this order, for callouts:

-
- #
- §
- ^
- \$

manuscript example

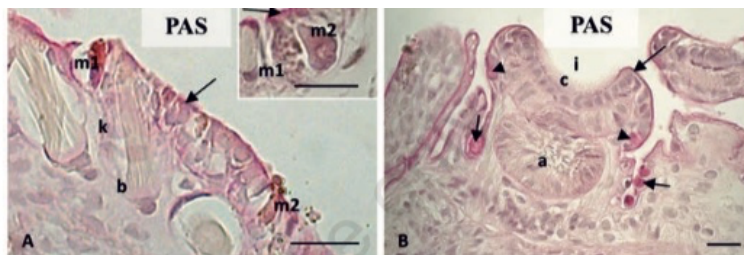
86

87 Table 2. xxxxXXXXX xxxaxaxaxax

88 Table 3. XXXXXXXXXXXXXXXXXXXX xxxxx.

89 Table 4. XXXXXXXXXXXXXXXXXXXX xxxxx.

manuscript example



90 Figure 1. XXXXXX xxxxxxxxxxxx.

91

92

***Figures:** Figures are numbered consecutively in Arabic numbers. References should be made in the text to each figure. Each figure should have a caption. The term “figure” is used also for graphs and photos. Symbols and abbreviations used in figures can be defined in the figure caption or note or within the figure itself. Lettering of figures (letters, numbers, symbols, etc.) must be clearly labelled and sized in order to remain legible after the image is reduced for publication. Please avoid the use of **bold** face or **greater size** for the characters.

At manuscript acceptance, the figures must be submitted as .tiff or .jpg files, with the following digital resolution:

Colour (saved as CMYK): *minimum 300 dpi*
Black and white/grays: *minimum 600 dpi*
one column width (8.5 cm) or 2 column widths (17.5 cm).

Combined figures: if the figure contains two or more panels or subpanels, make sure a description for each panel is provided, in the order in which they are presented. Different panels should be identified by capital letters and a description of each panel should be identified in the figure legend by the related capital letter in brackets. If symbols are used, make sure such symbols are clearly distinguished from the letters used to identify each panel.